



Active Transportation Counts Program Update

CAC Bicycle/Pedestrian Subcommittee
September 18, 2018

Project Overview – What?

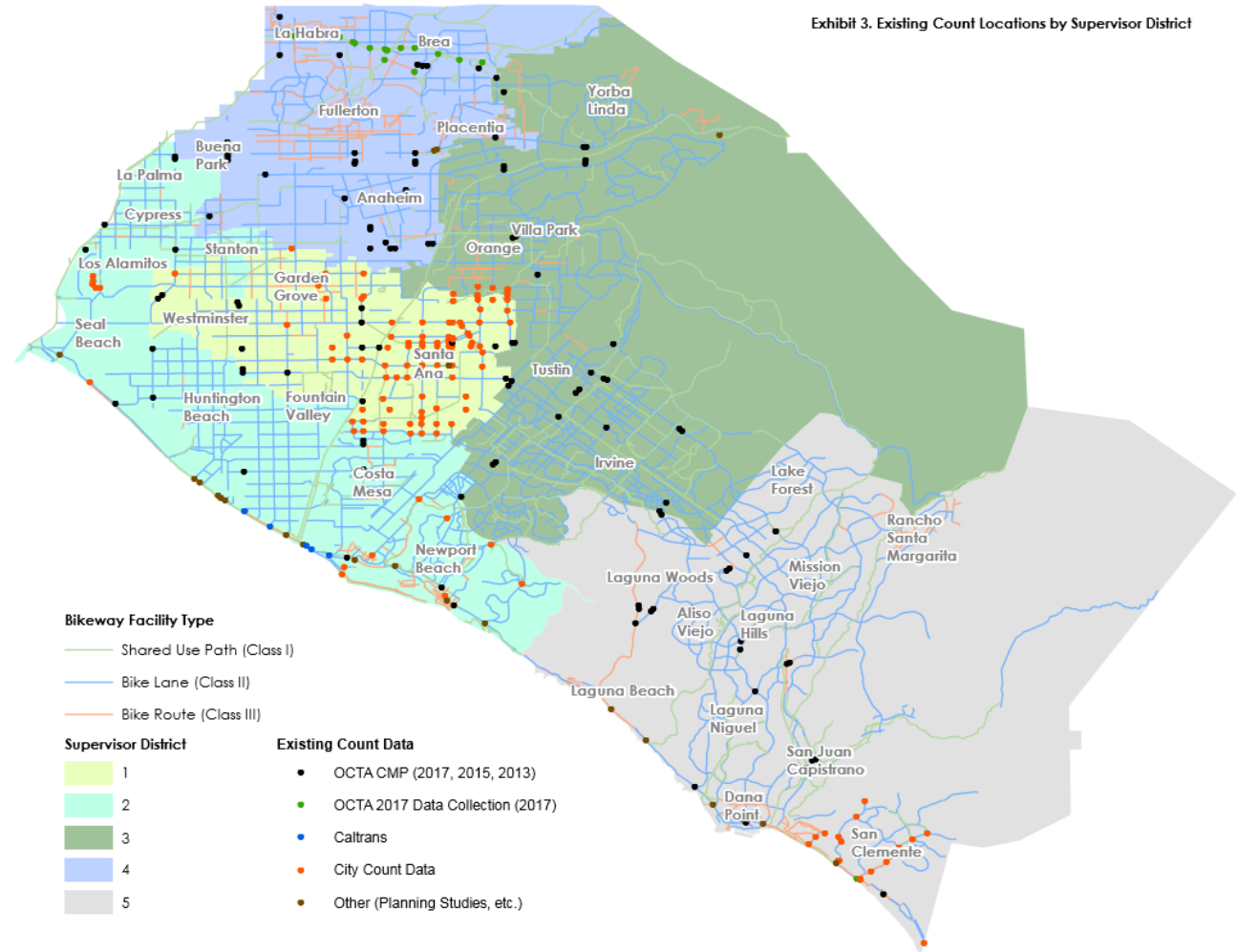
The Active Transportation Count Program will:

- Build from existing efforts to collect bicycle and pedestrian counts throughout the County
- Consolidate all counts in one location
- Help guide future active transportation investments
- Support regional active transportation efforts
- Develop a bicycle flow map

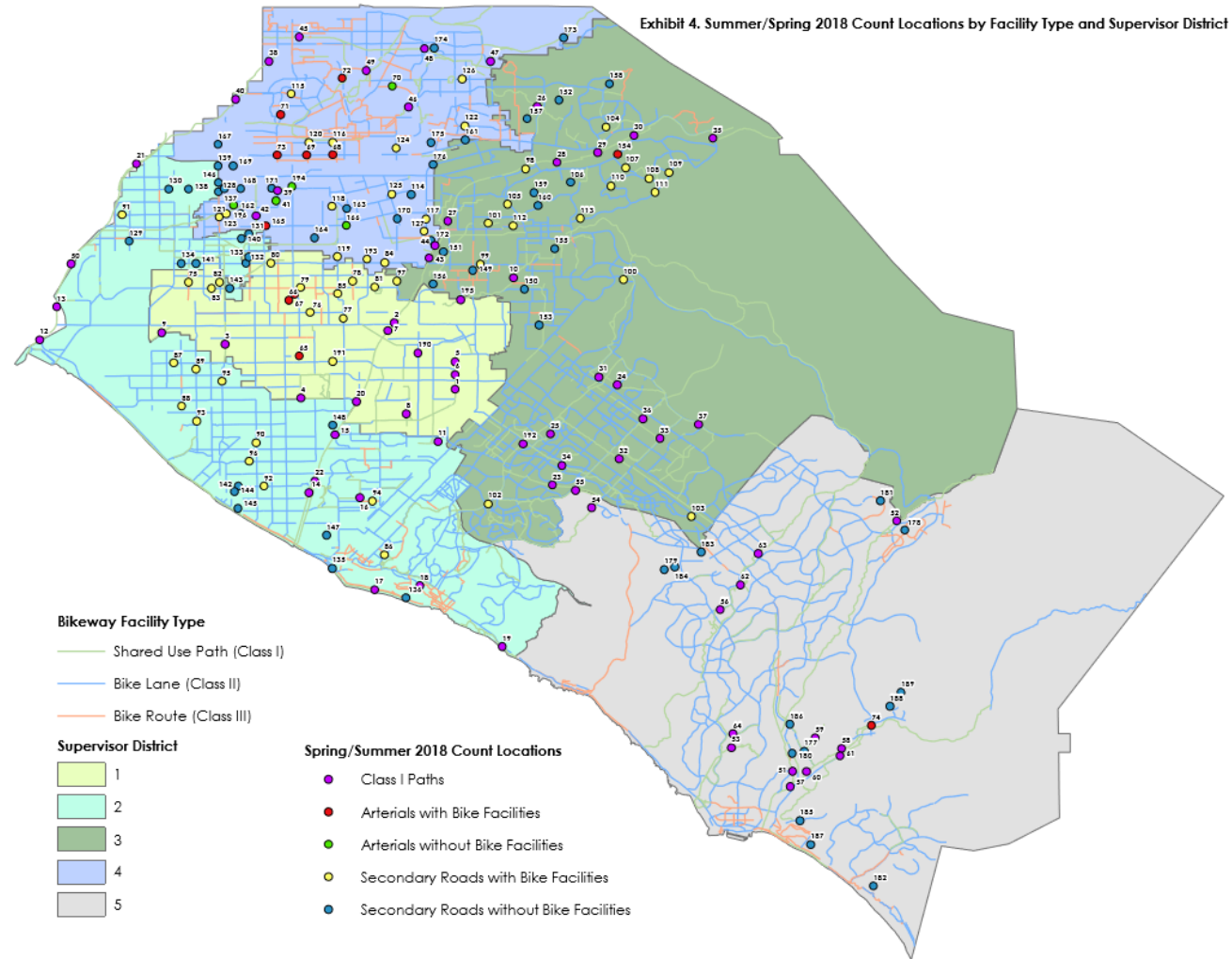
Existing Data Review

Count locations:

- Concentrated
- Higher order roadways
- Ramp locations

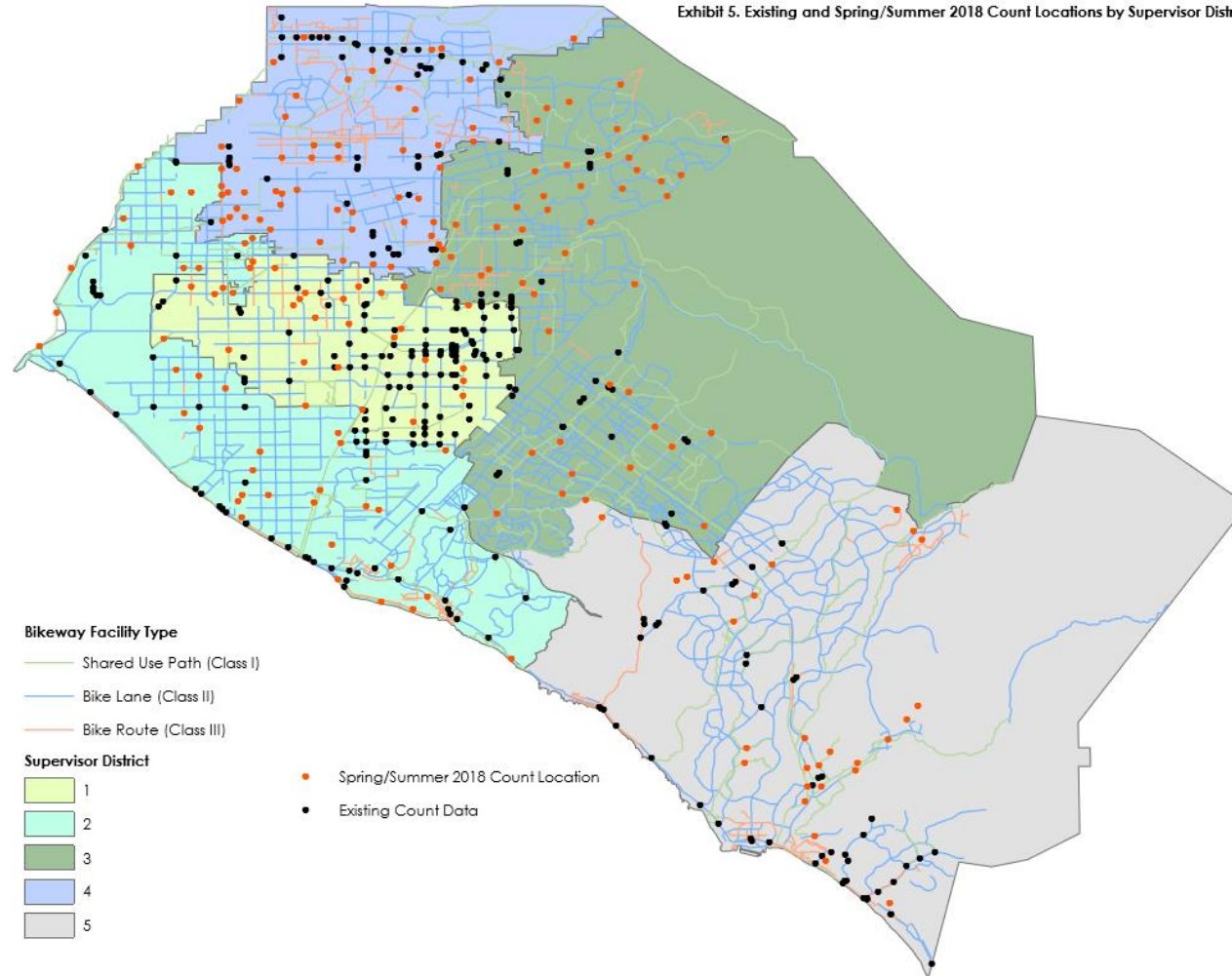


Spring/Summer 2018 Counts



Existing Plus 2018 Counts

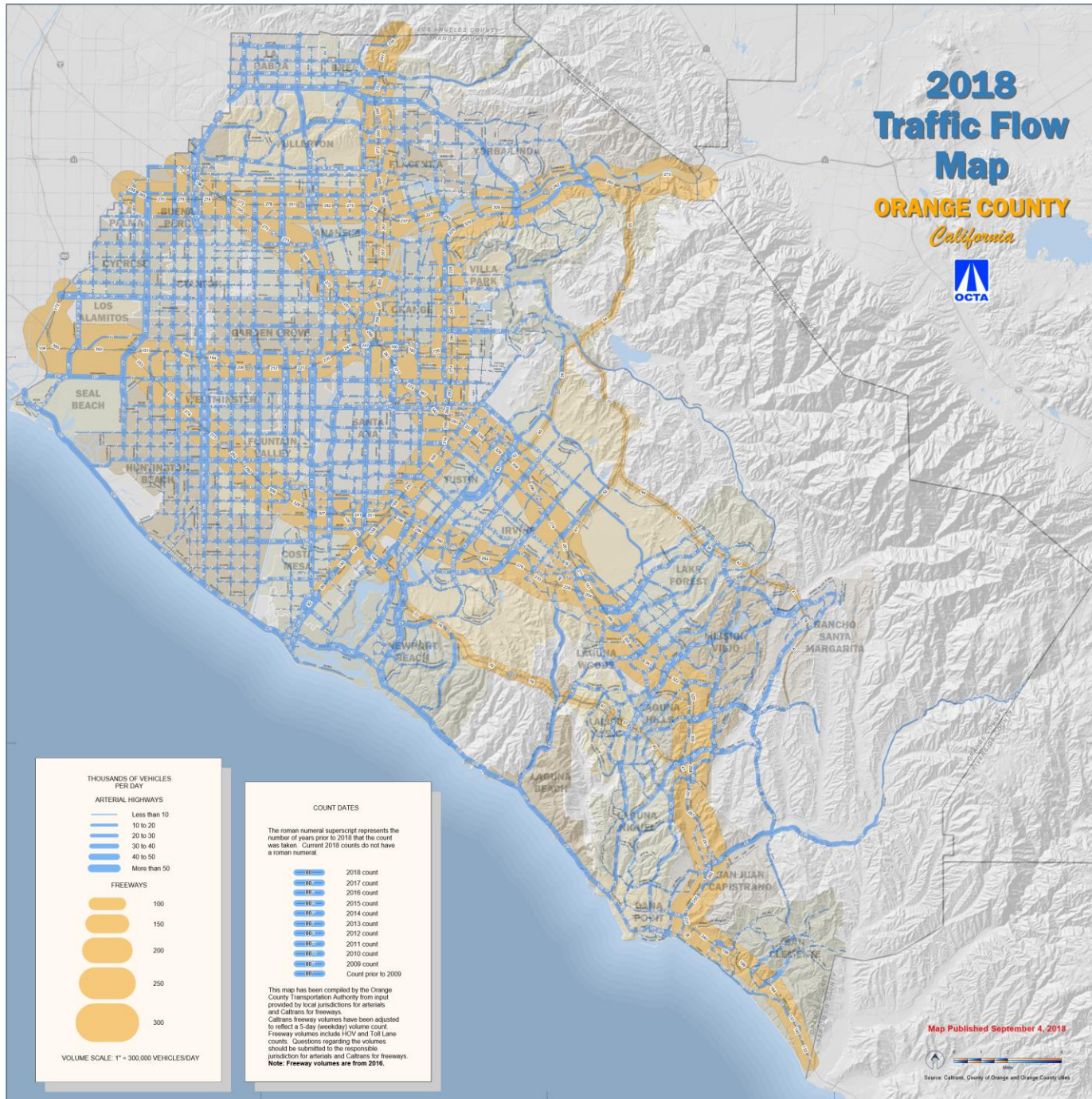
Exhibit 5. Existing and Spring/Summer 2018 Count Locations by Supervisor District



2018 Traffic Flow Map

ORANGE COUNTY

California



THOUSANDS OF VEHICLES PER DAY

ARTERIAL HIGHWAYS

- Less than 10
- 10 to 20
- 20 to 30
- 30 to 40
- 40 to 50
- More than 50

FREWAYS

- 100
- 150
- 200
- 250
- 300

VOLUME SCALE: 1" = 300,000 VEHICLES/DAY

COUNT DATES

The roman numeral superscript represents the number of years prior to 2018 that the count was taken. Current 2018 counts do not have a roman numeral.

- 2018 count
- 2017 count
- 2016 count
- 2015 count
- 2014 count
- 2013 count
- 2012 count
- 2011 count
- 2010 count
- 2009 count
- Count prior to 2009

This map has been compiled by the Orange County Transportation Authority from input provided by local jurisdictions for arterials and Caltrans for freeways. Caltrans freeway volumes have been adjusted to reflect a 5-day (weekday) volume count. Freeway volumes include HOV and Toll Lane counts. Questions regarding the volumes should be submitted to the responsible jurisdiction for arterials and Caltrans for freeways. **Note: Freeway volumes are from 2016.**

Map Published September 4, 2018

Source: Caltrans, County of Orange and Orange County cities

Recommendations - Count Program Elements

1. Continuous Counts

- Temporal trends
- Located based on travel patterns
- Automatic counter

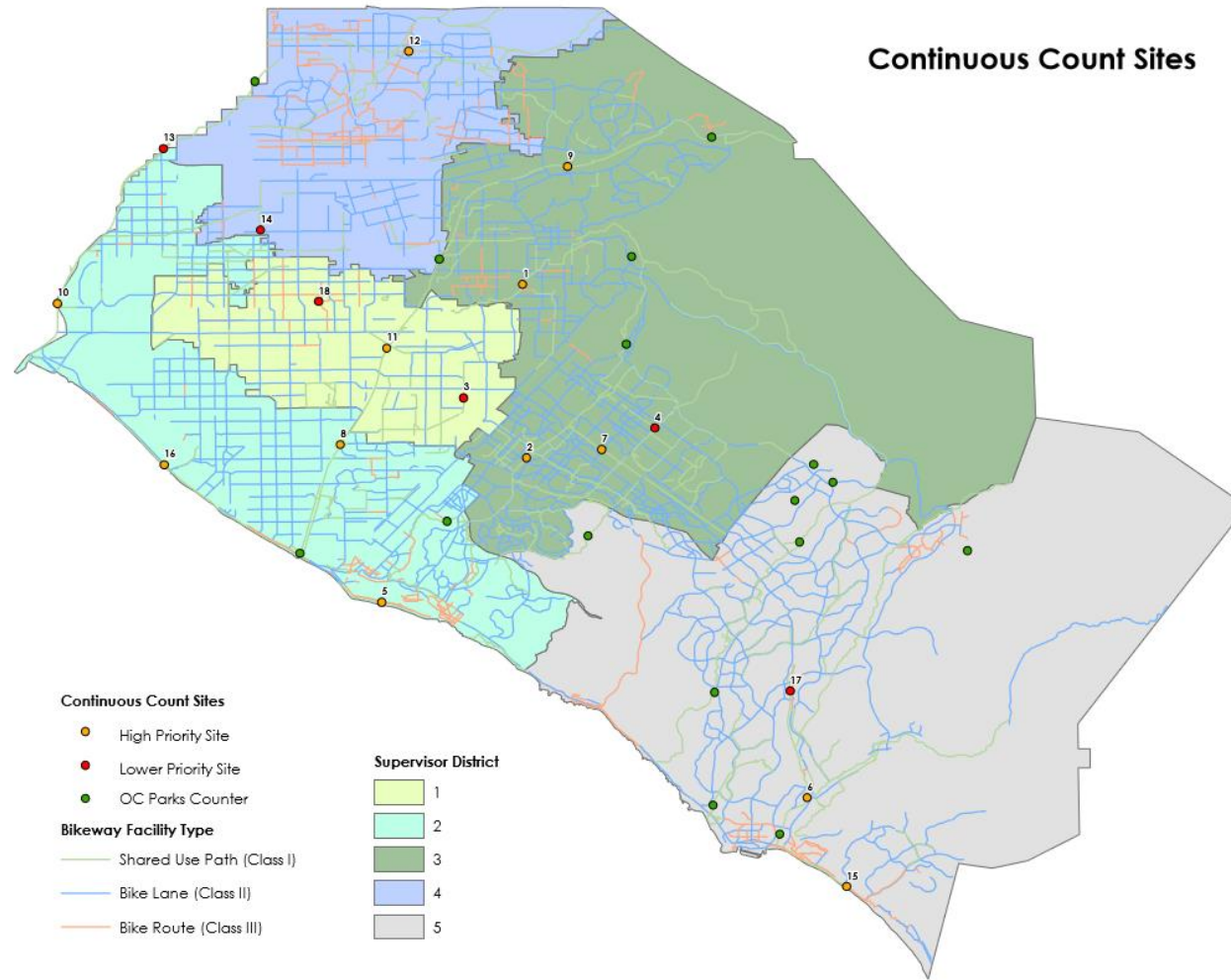
2. Cyclic Counts

- Distributed across County
- Collected periodically
- Manual or automatic counter

3. Specific Purpose Counts

- Based on specific needs
- Example: before-and-after counts

Continuous Count Sites



Next Steps

To be finalized in October 2018:

- Bicycle Flow Map
- Program recommendations
- Funding program

Contact Information

Sam Sharvini, Project Manager

(714) 560-5769

ssharvini@octa.net

Project Overview – Why?

- Data is an important part of **measuring progress** towards goals and **guiding investments**.
- Efforts throughout the County should be **complementary**, and **consistent** methods should be used to collect and report count data.
- A database for storing and sharing counts will make the data more **accessible**.

Spring/Summer 2018 Counts

- 196 locations counted by OCTA

Table 1. Strata by Supervisor District

Facility Type	# of Existing Counts # of New Counts				
	1	2	3	4	5
A. Class I paths	7 10	7 12	4 15	1 13	6 14
B. Arterials with bike facilities	17 3	96 0	31 0	13 7	55 0
C. Arterials without bike facilities	130 0	28 0	26 0	68 0	21 0
D. Secondary (not including local) roads with bike facilities	9 11	9 11	3 17	6 14	21 0
E. Secondary (not including local) roads without bike facilities	79 0	0 21	7 13	5 15	7 13
Total	242 24	140 44	71 45	93 49	110 27

Recommendations - Priorities for Counts



Count **before and after** facilities are added/modified to measure change in use

Inform assessments of **safety exposure**

Conduct counts at locations with bicycle/pedestrian **safety concerns**

Use count data to inform **grants**

Use count data to **prioritize** improvements

Assess **trends** over time

Use count data to refine **bicycle flow map**

Pedestrian Cyclic Count Locations

Figure 1. Pedestrian Cyclic Count Locations

