



DIRECTIONS 2045

LONG RANGE TRANSPORTATION PLAN

Long-Range Transportation Plan Draft Preview

Citizens Advisory Committee

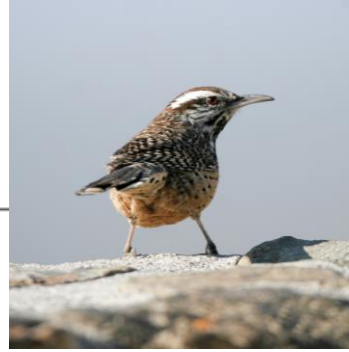
October 18, 2022

Sustainable, equitable, and innovative transportation solutions.



Key Challenges

- Growing travel demand and built-out roadway system
- Evolving travel trends
- Increasing climate-related risks
- Changing funding outlook
- Diversity, equity, and inclusion



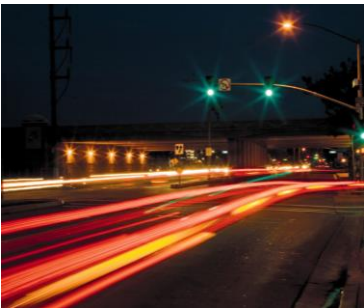
1. Extend or Modify M2 Programs

Purpose:

- Invest funds in popular and effective programs beyond the sunset of M2

How:

- Signal synchronization
- Roadway improvements
- Community circulators
- Metrolink service
- Transit accessibility
- Senior mobility
- Environmental mitigation





2. Expand Transit Services

Purpose:

- Provide more service tailored to local needs

How:

- Rapid bus (BRAVO!)
- Microtransit (OC Flex/SC Rides)
- High-capacity transit
- Reduced or free transit fares

SC Rides – City of San Clemente partnership with Lyft and Butterfli to provide subsidized on-demand rides to and from select areas throughout San Clemente.





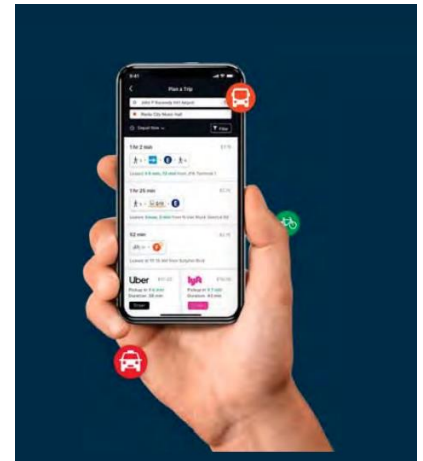
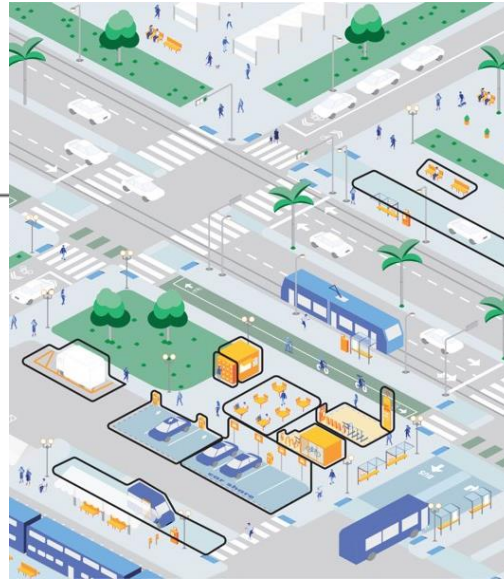
3. Enhance Active Transportation

Purpose:

- Provide safe and attractive active transportation facilities through coordination with local jurisdictions

How:

- Coordinate regional routes
- Support local routes
- Reallocation of excess roadway space



4. Explore Mobility Integration

Purpose:

- Improve access to mobility options and reduce first-/last-mile challenges

How:

- Mobility hubs
- Mobility as a service
- Micromobility



5. Eliminate Freeway Chokepoints

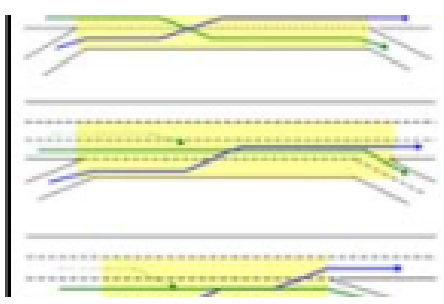
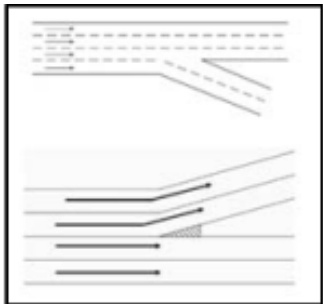
Purpose:

- Enhance safety and reduce driving delays within existing right-of-way



How:

- Auxiliary lanes
- Braided ramps
- Address lane drops
- System management





6. Embrace Technology

Purpose:

- Leverage technology and services to provide more options and improve efficiency

How:

- Electric vehicle charging stations
- Remote work/teleservices
- E-bikes/neighborhood electric vehicles
- Connected vehicles/enhanced signal synchronization
- Monitor emerging technology



7. Elevate Maintenance and Resilience Priorities

Purpose:

- Preserve and protect transportation investments

How:

- Maintain existing infrastructure
- Assess risks and mitigations
- Electric bus fleet



L RTP Goals Review

Goals	Metrics	Paths to Success						
		Extend or Modify M2 Programs	Expand Transit Services	Enhance Active Transportation	Explore Mobility Integration	Eliminate Freeway Chokepoints	Embrace Technology	Elevate Maintenance and Resilience Priorities
Improve System Performance	Less time in traffic	X				X	X	
	Reliable travel times	X	X		X	X	X	
	Enhanced safety for all	X				X		
Expand System Choices	Improved access to jobs and key destinations	X	X		X	X	X	
	Improved access to transit		X		X			
	Fewer single-occupant vehicle trips	X	X	X	X		X	
	Lower travel costs	X	X	X	X			
	Expanded bikeways network			X				
	More multimodal and rideshare facilities				X			
Support Sustainability	Fewer vehicle miles traveled	X	X	X	X		X	
	Reduced emissions	X	X	X	X	X	X	X
	Maintains pavement conditions	X						X
	Reduced climate-related risk							X

Short-Term Action Plan

Orange County Planning Activities	
Coordination with Local Partner Agencies	Transportation Demand Management
Long-Term Transportation Funding Strategy	Mobility Hubs
Corridor Studies and Improvements	Active Transportation Investments
OC Transit Vision Update	Complete Streets
Transit Support Services	Sustainable Transportation Strategies
OC Metrolink Vision	Electric Vehicle Charging Infrastructure
Managed Lane Studies	Joint Development Studies
Future of the Toll Roads	Asset Management
Freeway Chokepoints	Adaptation Planning
Signal Synchronization Strategies	Traffic Model Update

Short-Term Action Plan (continued)

Regional Planning Activities	Emerging Issues
<p>Coordination with Regional Partner Agencies</p>	<p>Monitor Technology</p>
<p>Trade Corridors/Goods Movement</p>	<p>Connected Infrastructure Needs Assessment</p>
<p>2024 RTP/SCS</p>	<p>State and Federal Regulation</p>
<p>2028 Olympics</p>	<p>State and Federal Funding</p>
<p>LA Metro Countywide ExpressLanes Strategic Plan</p>	<p>Transportation Outreach and Education</p>
<p>San Diego’s I-5 HOT Lane Project</p>	<p>Active Transportation Safety</p>
<p>West Santa Ana Branch/ Pacific Electric Right-of-Way</p>	<p>Transit Use and Trip Planning</p>
<p>Gold Line Eastern Extension – Phase 2</p>	<p>Diversity, Equity, and Inclusion</p>

RTP/SCS – Regional Transportation Plan/ Sustainable Community Strategies
 LA Metro – Los Angeles Metropolitan Transportation Authority
 I-5 – Interstate 5
 HOT – High-occupancy toll

Next Steps

October - November 2022

2024 RTP/SCS - Initial project list submittal

Complete draft LRTP document

Initiate public review period (45 days or more)



December 2022 – February 2023

Public engagement through mid-January

Review and respond to feedback

Prepare draft final LRTP



March 2023

Draft final LRTP to the OCTA Board of Directors

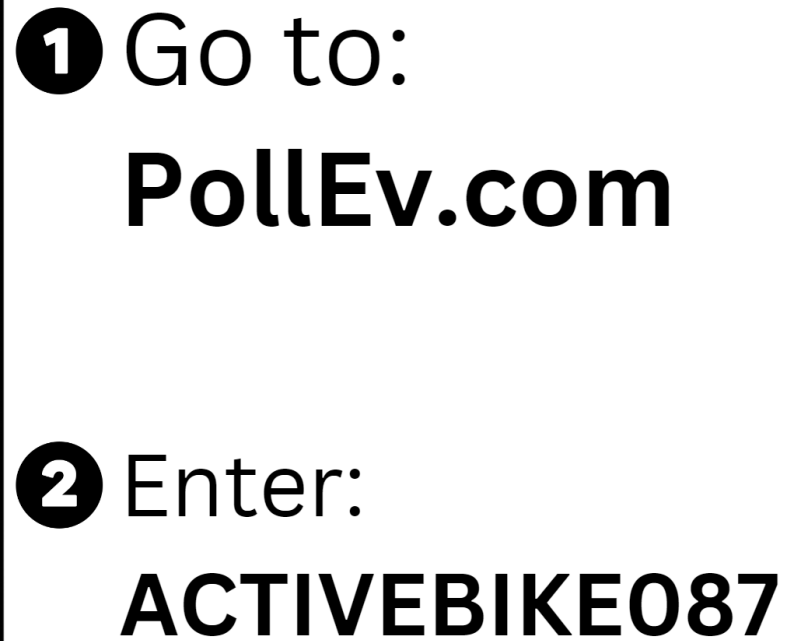
Public and Stakeholder Engagement

- Multilingual online survey, digital media, and print/radio ads
- Community events
- Multilingual printed materials
- Telephone helpline
- Telephone townhall
- OCTA Advisory Committees
- Community-based organizations



Poll Questions

How to Join

- 
- 1** Go to:
PollEv.com
 - 2** Enter:
ACTIVEBIKE087

Select the top two elements that you believe would be most useful at mobility hubs. (select top two)

On-demand shuttle services (OC Flex)

Delivery/parcel lockers

Rideshare (Uber/Lyft)

Bike/e-bike share

E-scooter share

Carsharing (Zipcar, Getaround)

Please rank the following technologies in order of how much influence you think they might have (1 = most influence, 6 = least influence)

Electric vehicles

Remote Work / Teleservices

E-Bikes / Neighborhood Electric Vehicles

Connected / Autonomous vehicles

Vertiports / Air taxis

Other

Which of the Paths to Success do you think could provide the most benefit in Orange County? (select top three)

Extend/modify select M2 programs

Expand transit services

Enhance active transportation

Explore mobility integration

Eliminate freeway chokepoints

Embrace technology

Elevate maintenance and resilience priorities