

# Project Update to OCTA Citizen's Advisory Committee

July 18, 2023



# Project Partners and Area



# Major Project Improvements

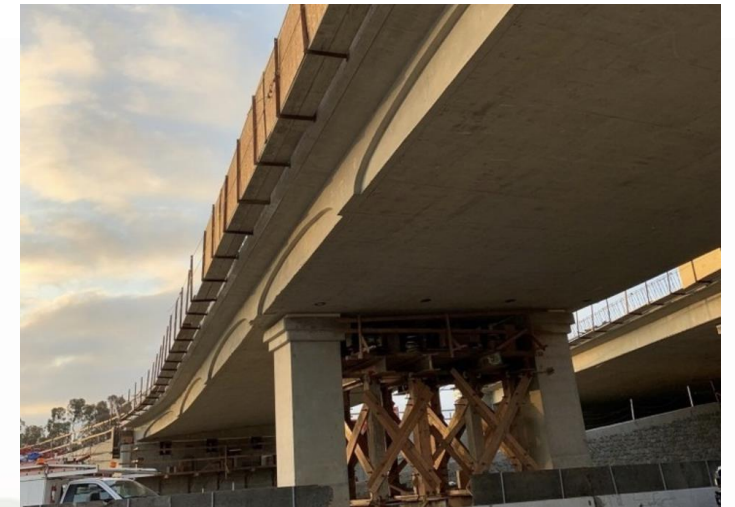
- 1 New general-purpose lane in both directions from Avery Parkway to Alicia Parkway
- 2 Extend second carpool lane in both directions from Alicia Parkway to El Toro Road
- 3 Reconstruct Avery Parkway & La Paz Road interchanges & Los Alisos overcrossing
- 4 Reconstruct & add auxiliary lanes
- 5 Realign and/or improve on- and off-ramps

# Project Update

75%



Roadway



Bridges



Walls



# Avery Parkway Interchange





# Avery Parkway Interchange



- Completed Stage 1 and Stage 2
- Stage 3 Underway
- Standardized Bike Lanes
- Tie-in to Marguerite Parkway & Camino Capistrano
- Standardized Sidewalks

# La Paz Road Interchange

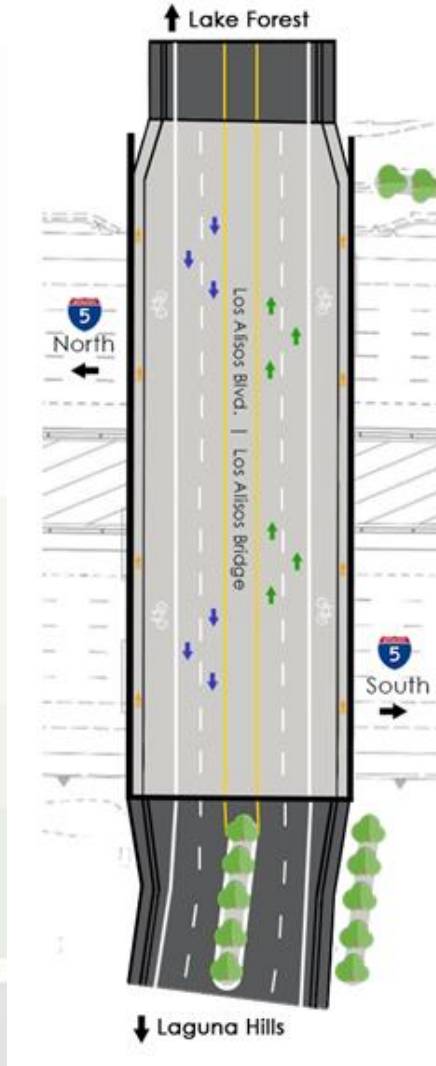


70%

- Three stage process
- Stage 1 and 2 complete
- Stage 3 Underway
- 5 Foot Bike Lanes
- Tie-in to La Paz Road (westbound and eastbound)
- Standardized Sidewalks

# Los Alisos Boulevard Bridge

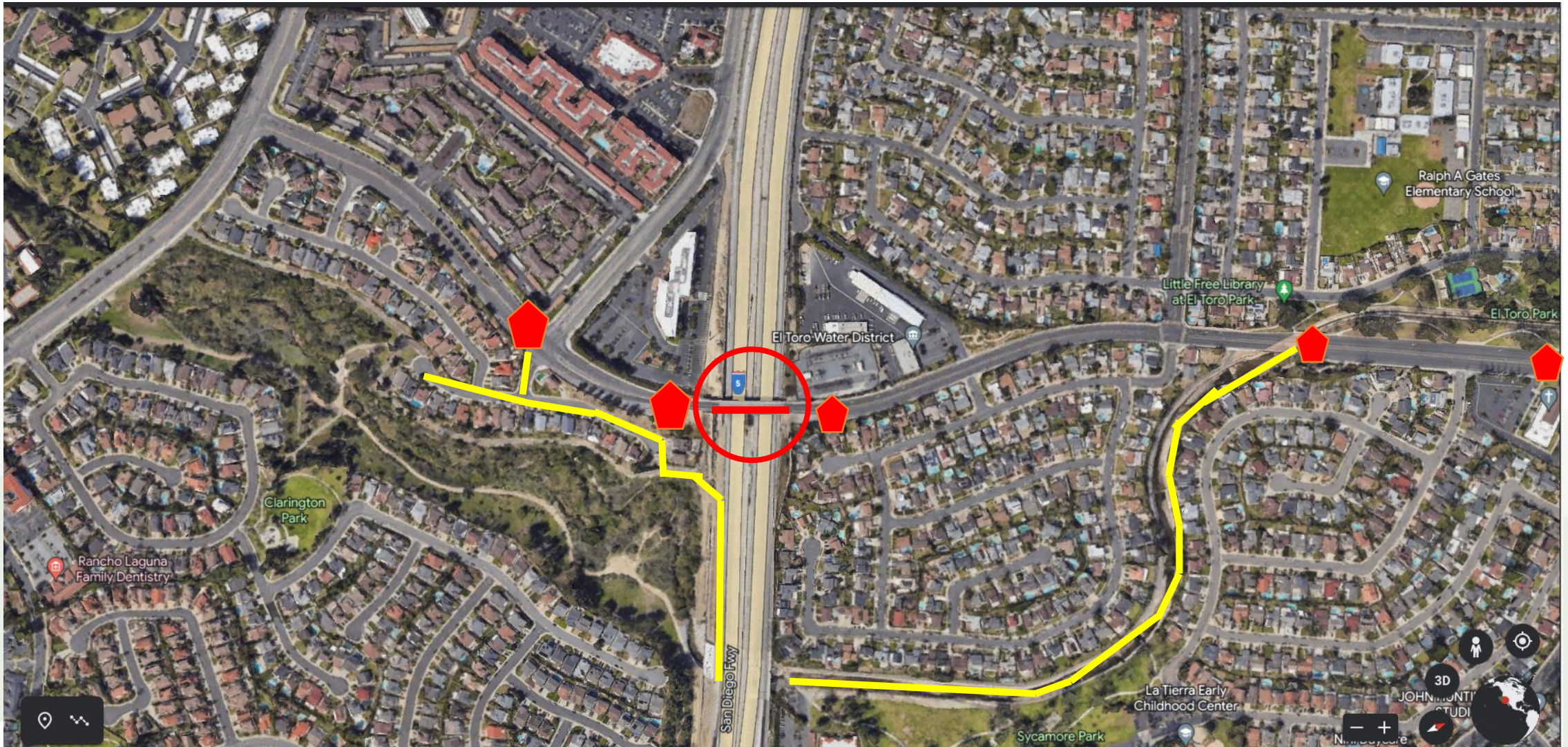
60%



- Two westbound lanes
- Two eastbound lanes
- Center median
- Full width sidewalks
- Full width bicycle lanes
- Footprint complies with Master Plan of Arterials and Highways



# Los Alisos Bicycle Lane Reduction/Detour





# Aliso Creek Bicycle and Hiking Trail

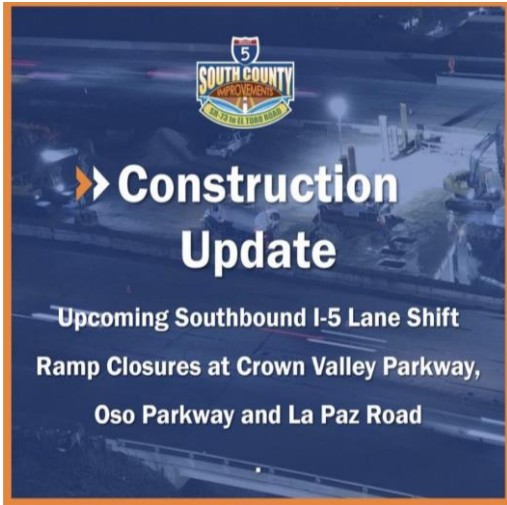


**Aliso Creek  
Bikeway and  
Aliso Creek  
Hiking &  
Riding Trail**

**NOW  
OPEN!**



# Public Outreach and Communications



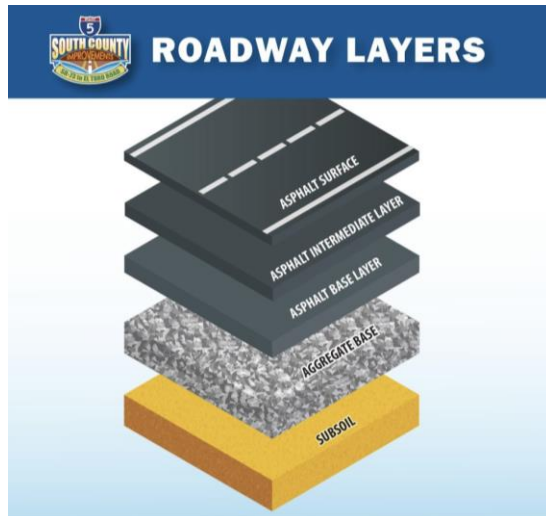
**Construction Update**

Upcoming Southbound I-5 Lane Shift  
Ramp Closures at Crown Valley Parkway,  
Oso Parkway and La Paz Road



*Now Open*

Southbound Crown Valley Parkway  
On-Ramp Turn Lanes



**THE NEW LOS ALISOS BRIDGE BY THE NUMBERS**

TRAVELING **373 MILES** **INTERSTATE CALIFORNIA 5**

FROM Lathrop, CA TO Lake Forest, CA

DELIVERING **22** Concrete Girders for reconstruction of eastbound lanes

**166,000** lbs. Avg. Weight

**126'** Avg. Length

**197'** **500** Ton Crane

PLACING each girder in position to form the bridge

**SOUTH COUNTY IMPROVEMENTS**  
80-70 TO EL TORO ROAD



# Safety, Motorists, Next Steps

- 1 Safety is highest priority; continuous coordination with CHP, Fire, Police, schools, etc.
- 2 Motorists have maintained access to all general-purpose lanes and on/off ramps during daytime and peak hours throughout construction
- 3 Lane and ramp closures limited to nighttime, and off-peak hours (No daytime closures)
- 4 Finalize Avery Parkway, La Paz Road and Los Alisos
- 5 Special weekend and 9-day closures of ramps at Alicia Parkway Interchange



**ORANGE COUNTY  
SHERIFF'S DEPARTMENT**

# Staff and Contact Information



Fernando Chavarria  
(714) 560-5306  
fchavarria@octa.net



Melody Yang  
(714) 560-5061  
myang@octa.net



[octa.net/i5SouthCounty](https://octa.net/i5SouthCounty)



[i5SouthCounty@octa.net](mailto:i5SouthCounty@octa.net)



[@OCi5SouthCounty](https://www.instagram.com/OCi5SouthCounty)



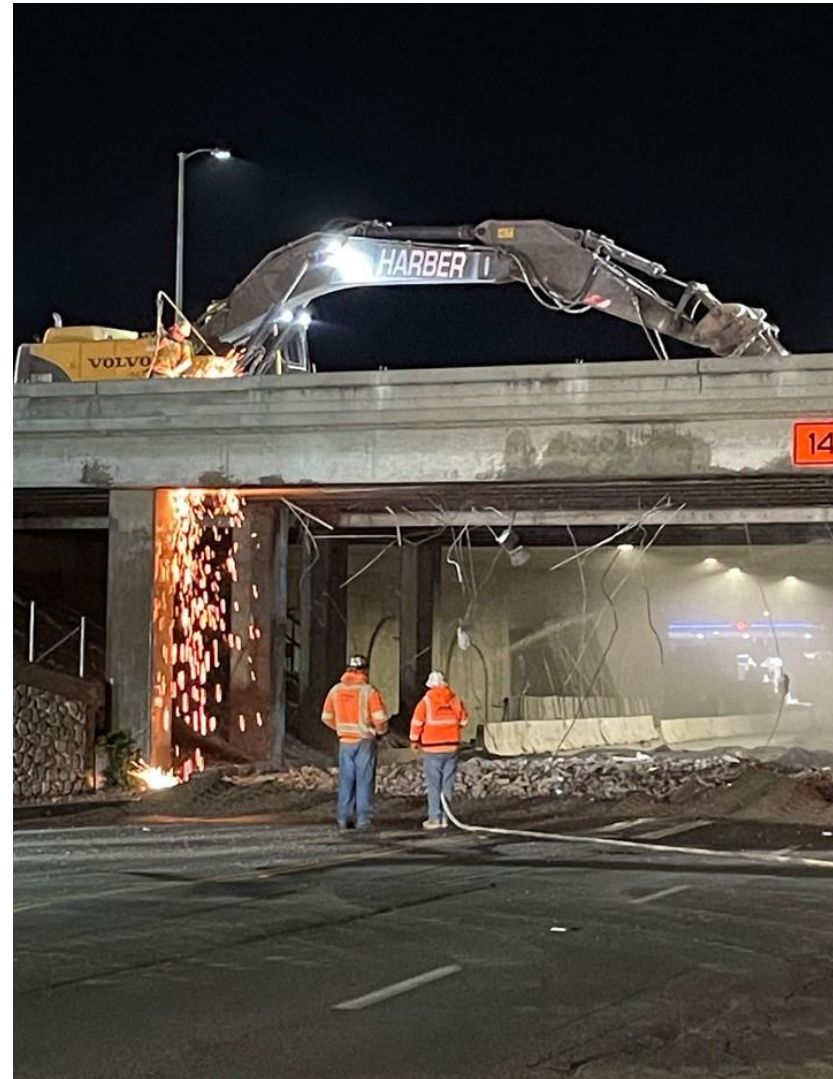
[Facebook.com/OCi5SouthCounty](https://Facebook.com/OCi5SouthCounty)

# Northbound Oso Parkway





# La Paz Boulevard



# Retaining Wall 191





# Los Aliso Bridge





# Southbound El Toro



# Southbound El Toro





# Southbound Oso Parkway

