



Construction Alert

Week of December 4, 2023

Construction Highlights:

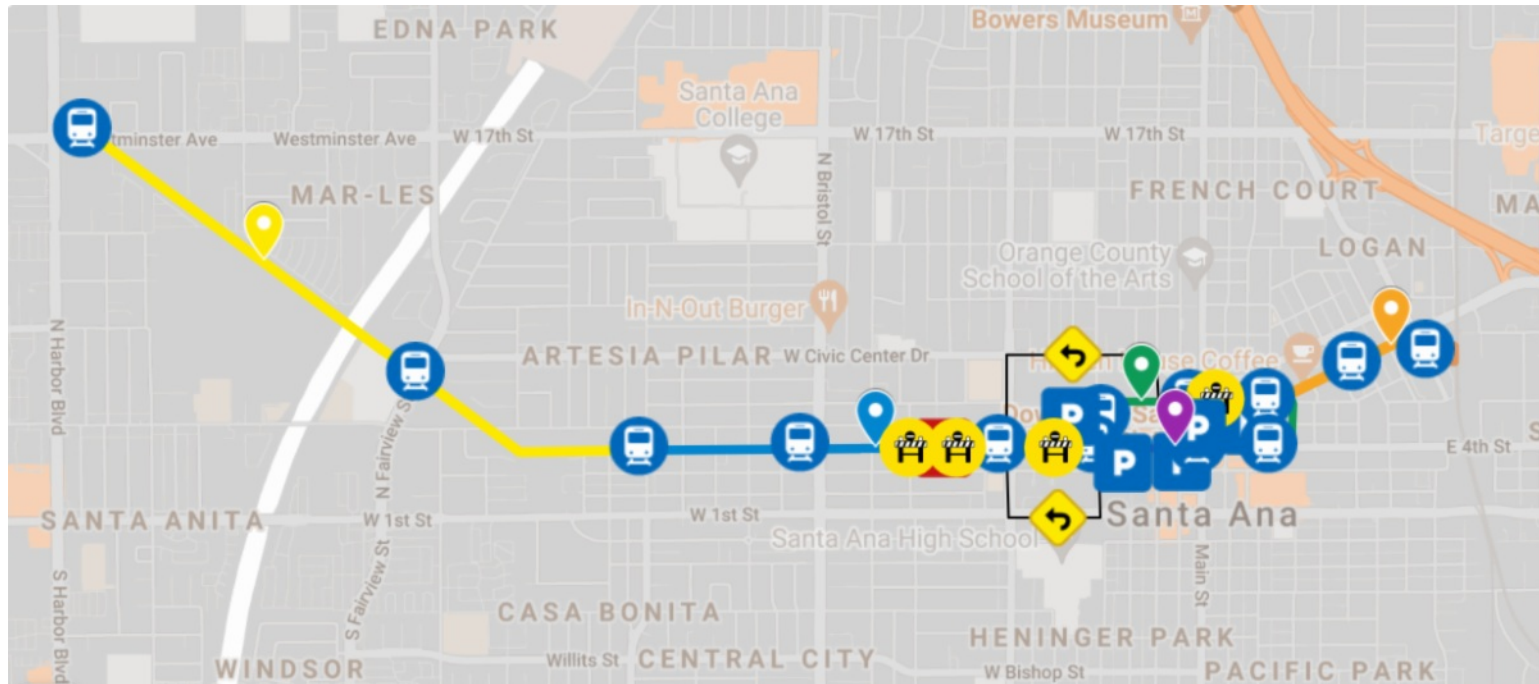
- Paving activities in Segment 2. Work requires driveways, street parking and traffic to be closed on the north side of Santa Ana Boulevard between on Raitt Street and Bristol Street from December 5, at 7 a.m., through December 7, at 5 p.m. Driveways, street parking and traffic will be closed on the south side of Santa Ana Boulevard between Raitt Street and Bristol Street from December 6, at 7 a.m., through December 8, at 5 p.m. Learn more [here](#).
- Platform installation in Segment 3 along Santa Ana Boulevard at Sycamore Street and at French Street. Temporary lane and parking restrictions are required along the segment.
- Curb improvements and paving in Segment 3. Work requires a closure of Santa Ana Boulevard from Broadway to Parton Street and a closure of the northbound lane on Ross Street from Civic Center Drive to Santa Ana Boulevard. Learn more [here](#).
- Platform installation and sidewalk improvements along Segment 4.
- Platform construction in Segment 5. Work requires the below traffic controls to be in effect. Learn more [here](#).
 - Closure of the north side of Santa Ana Boulevard from Minter Street to Poinsettia Street. Eastbound traffic is shifted to the south side of the street. Westbound traffic is detoured.
 - Partial intersection closures at Lacy Street and Garfield Street.
- Paving activities at the Santiago Street and Santa Ana Boulevard intersection. Work requires a full intersection closure from December 8, at 9 a.m., through December 11, at 7 a.m. Crews will be working 24 hours a day for the duration of the work, including nighttime hours.

Access will be maintained for all residents and businesses. Construction activities are dependent on weather and resource availability.

For information on how to process a construction-related, personal or property damage claim, please contact Tresa Oliveri at (714) 560-5374 or ocstreetcar@octa.net. She will provide information for the next steps in the process to file a claim with Walsh Construction.

[Click here](#) to check out featured businesses, services and events!

For specific work activities in your area, click on the map below.



Parking in Downtown Santa Ana

Street parking in Downtown Santa Ana may be limited while construction is active. Several parking structures are available throughout the downtown area that offer free parking Monday through Friday, from 7 a.m. to 5 p.m. The first 2 hours of parking are free evenings and weekends:

- 310 N Birch Street
- 253 E 3rd Street
- 420 N Main Street
- 300 E 5th Street

The entrances to parking structures are accessible from 5th Street and 3rd Street.

Download a PDF of the parking map [here](#).

The below parking structures are available while construction is active on 4th Street. Entrances to the structures are accessible from 5th Street and 3rd Street.

A map of downtown Santa Ana showing the locations of four parking structures. The map is a grid of streets with a north arrow. The streets shown are 5th Street, 4th Street, and 3rd Street running east-west, and N Birch Street, N Broadway, S Spangmoore Street, Main Street, N Bush Street, and N Spurgeon Street running north-south. The parking structures are marked with blue 'P' icons and orange callout boxes: 300 E 5th Street, 420 N Main Street, 310 N Birch Street, and 253 E 3rd Street.

OCSTREETCAR
Moving Forward

Free parking - M-F: 7 a.m. – 5 p.m.
2 Hrs. Free - Evenings & Weekends
OCStreetcar.com

Logos for OCSTREETCAR, OCgo, and other partners including GETA, ColSTA, and others.

Eat, Shop, Play

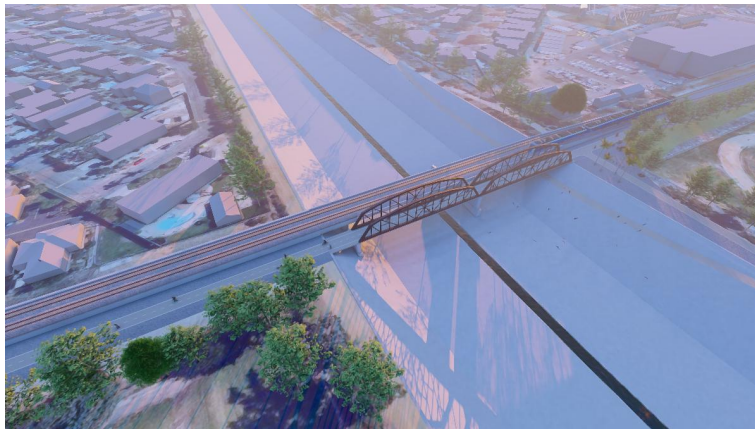


OCTA's Eat Shop Play program supports businesses located along the future OC streetcar route. Benefits to customers include special deals, invitations to community events and free parking for the first hour in nearby structures. Learn more at octa.net/eatshopplay.

About the Project

OC Streetcar is the first modern streetcar project to be built in Orange County and will serve Santa Ana's historic and thriving downtown, which includes federal, state and local courthouses, government offices, colleges, an artists' village and a thriving restaurant scene. It will operate along a 4.15-mile route that connects the Santa Ana Regional Transportation Center (SARTC) and a new transit hub at Harbor Boulevard and Westminster Avenue in Garden Grove.

Help OCTA design a walking and biking trail for your community!



Orange County Transportation Authority (OCTA), in cooperation with the cities of Garden Grove and Santa Ana, the California Department of Transportation (Caltrans), and the County of Orange, is advancing the OC Connect trail project. The project creates a 4-mile biking and walking trail connection between the downtown areas of Garden Grove and Santa Ana as well as to the Santa Ana River Trail and the countywide 66-mile bikeway - OC Loop. This project will improve the transportation network along the corridor and provide a safe, well-connected active transportation route. Sign-up to receive project updates!

[Sign up now!](#)

To share this e-blast, forward this [link](#).



OCstreetcar.com



OCstreetcar@octa.net



1(844) 7GO-OCSC or
1(844) 746-6272



facebook.com/OCstreetcar



@OCstreetcar



@OCstreetcar



OC Streetcar | 550 S. Main Street , Orange, CA 92868

[Unsubscribe mtwite@katzandassociates.com](mailto:mtwite@katzandassociates.com)

[Update Profile](#) | [Constant Contact Data Notice](#)

Sent by ocstreetcar@octa.net powered by



Try email marketing for free today!