



## **Construction Alert**

### **Week of July 18, 2022**

#### **Construction Highlights:**

- Platform installation in Segment 2. Work requires eastbound lane closures on Santa Ana Boulevard from Pacific Avenue to Bristol Street. Detours are available. Learn more [here](#).
- Track installation in Segment 2. Work requires eastbound and westbound traffic to be shifted to the north side of Santa Ana Boulevard between Bristol Street and Flower Street. Learn more [here](#).
- Platform installation at Sycamore Street and French Street. Work requires lane closures on Santa Ana Boulevard from Parton Street to Mortimer Street. Learn more [here](#).
- Track installation at the Santa Ana Boulevard and Main Street intersection. Work requires a full closure of the intersection. Detours are available. Learn more [here](#).
- Track installation on Ross Street between 5th Street and 3rd Street. Work requires full closures along Ross Street. Detours are available. Learn more [here](#).
- ADA ramp construction, paving and track installation in Segment 4. Work requires full closures along 4th Street. Detours are available.
  - 4th Street between Broadway and Main Street is closed.
  - 4th Street and Main Street intersection is closed. Learn more [here](#).
  - 4th Street between Main Street and Bush Street is closed.
  - Eastbound lanes on 4th Street from Bush Street through French Street are closed. Westbound lanes are open.

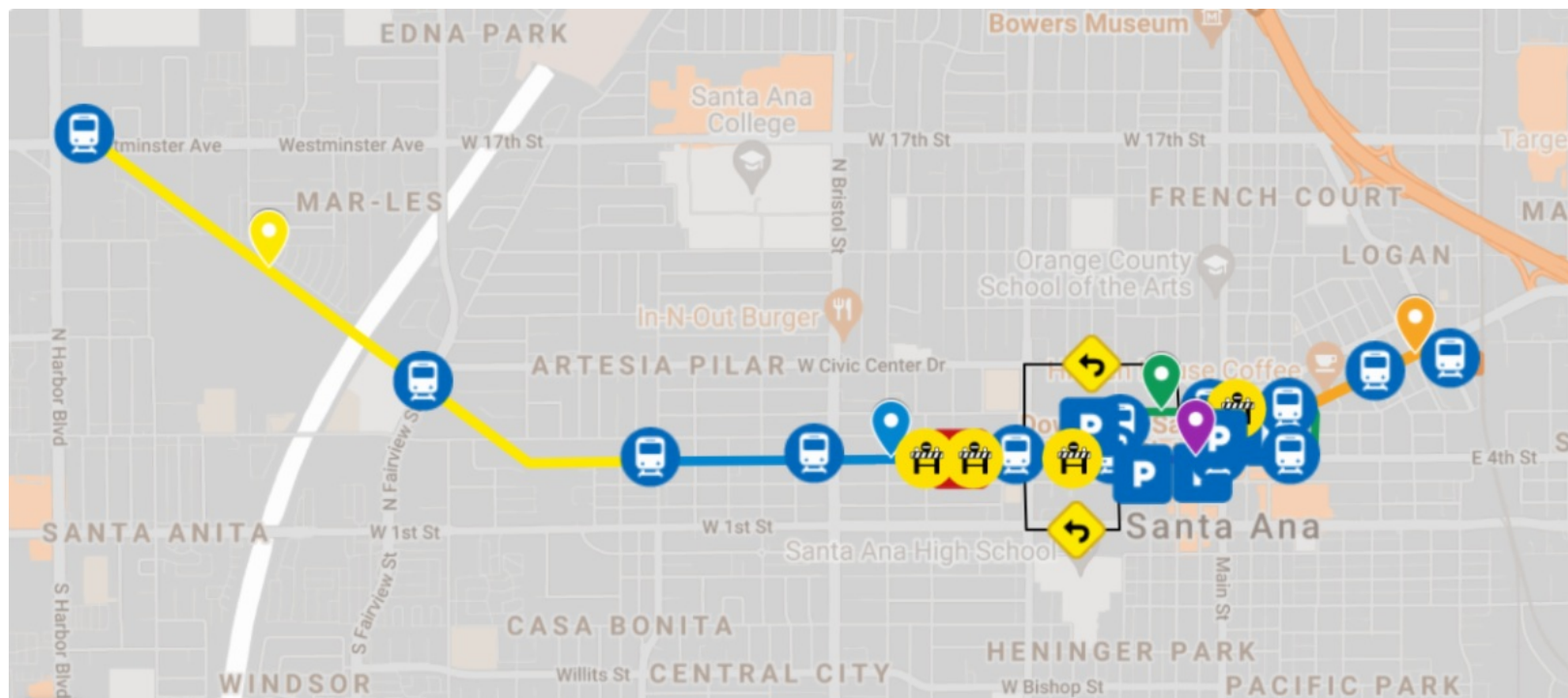
- Track installation in Segment 5. Work requires eastbound and westbound traffic to be shifted to the north side of Santa Ana Boulevard between Mortimer Street and Santiago Street. Learn more [here](#).
- Partial intersection closures are in place along Segment 5, between Mortimer Street and Poinsettia Street. Detours are available. Learn more [here](#).

*Access will be maintained for all residents and businesses. Construction activities are dependent on weather and resource availability.*

[Click here](#) for more information on track installation activities.

[Click here](#) to check out featured businesses, services and events!

**For specific work activities in your area, click on the map below.**

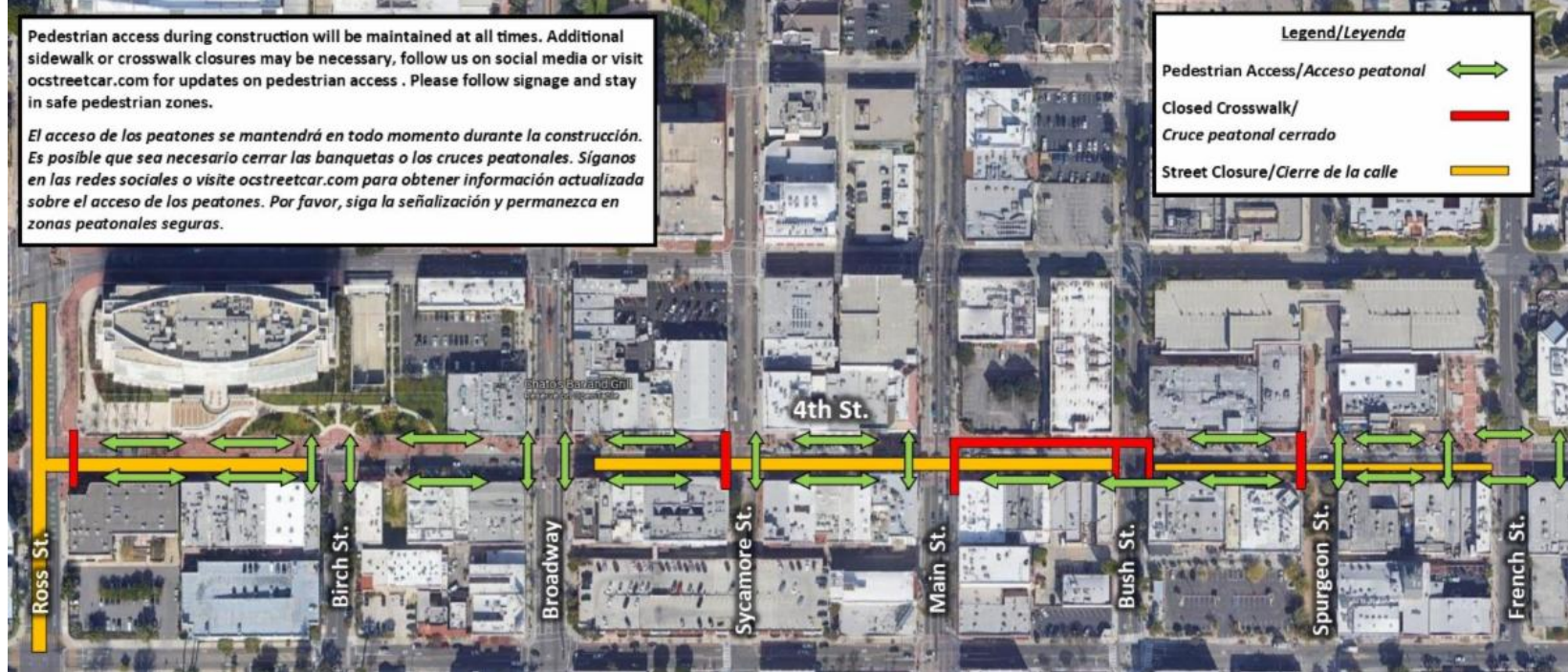


## **Pedestrian Access and Parking in Downtown Santa Ana**

While track construction on 4th Street in Downtown Santa Ana is active, pedestrian access will be maintained at all times. Some closures may be in place, please follow signage to stay in pedestrian safe zones.

Pedestrian access during construction will be maintained at all times. Additional sidewalk or crosswalk closures may be necessary, follow us on social media or visit [ocstreetcar.com](http://ocstreetcar.com) for updates on pedestrian access. Please follow signage and stay in safe pedestrian zones.

*El acceso de los peatones se mantendrá en todo momento durante la construcción. Es posible que sea necesario cerrar las banquetas o los cruces peatonales. Síguenos en las redes sociales o visite [ocstreetcar.com](http://ocstreetcar.com) para obtener información actualizada sobre el acceso de los peatones. Por favor, siga la señalización y permanezca en zonas peatonales seguras.*



## Parking

Street parking on 4th Street will be limited during track construction. Several parking structures are available throughout the downtown area that offer free parking Monday through Friday, from 7 a.m. to 5 p.m. The first 2 hours of parking are free evenings and weekends:

- 310 N Birch Street
- 201 W 3rd Street
- 253 E 3rd Street
- 420 N Main Street
- 300 E 5th Street

The entrances to parking structures are accessible from 5th Street and 3rd Street.

Click [here](#) for GoPro video directions from northbound I-5 to parking structures off of 3rd Street.

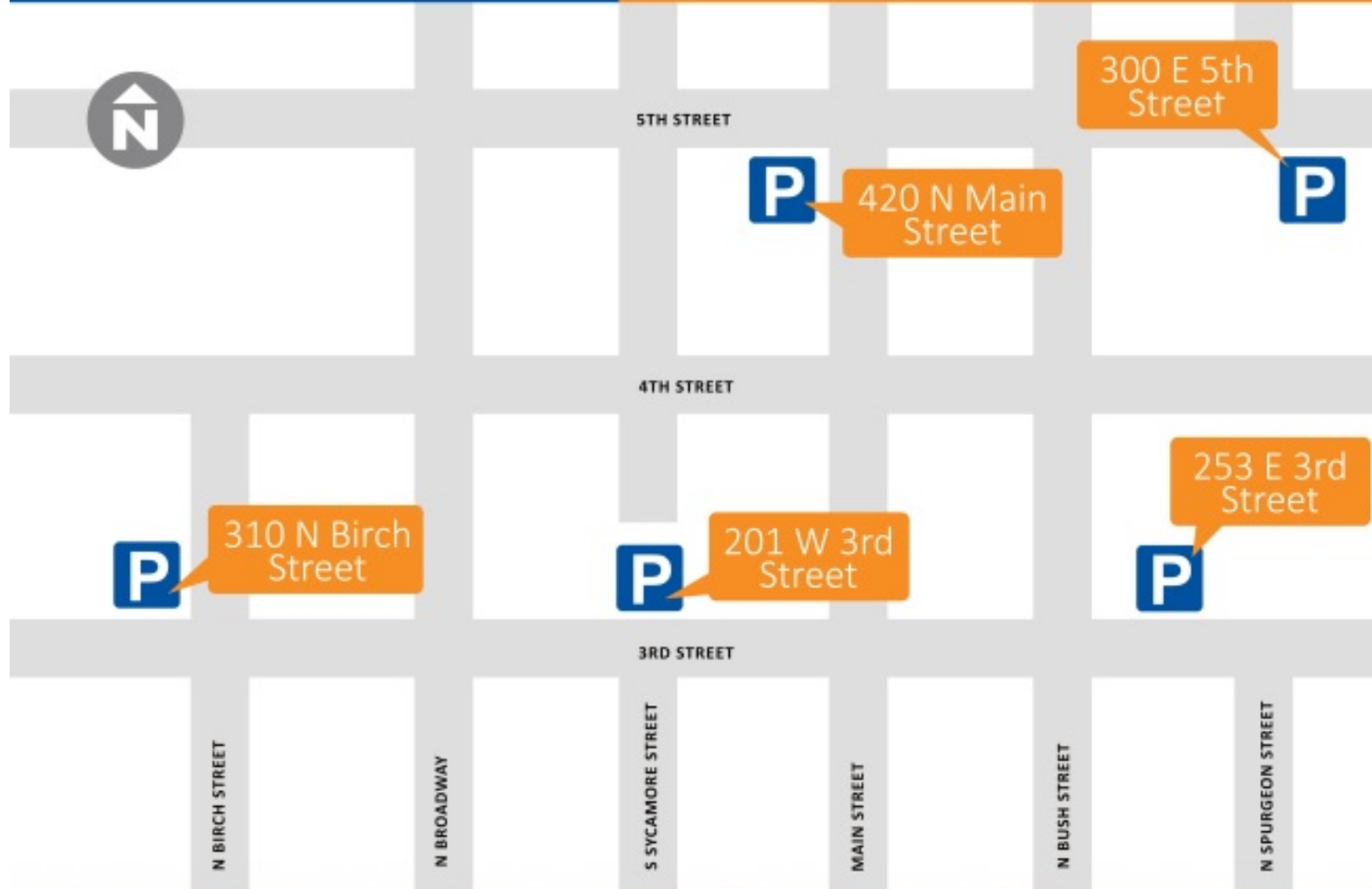
Click [here](#) for GoPro video directions from southbound I-5 to parking structures off of 3rd Street.



The below parking structures are available while construction is active on 4th Street. Entrances to the structures are accessible from 5th Street and 3rd Street.

# OC STREETCAR

Moving Forward



Free parking - M-F: 7 a.m. – 5 p.m.  
2 Hrs. Free - Evenings & Weekends

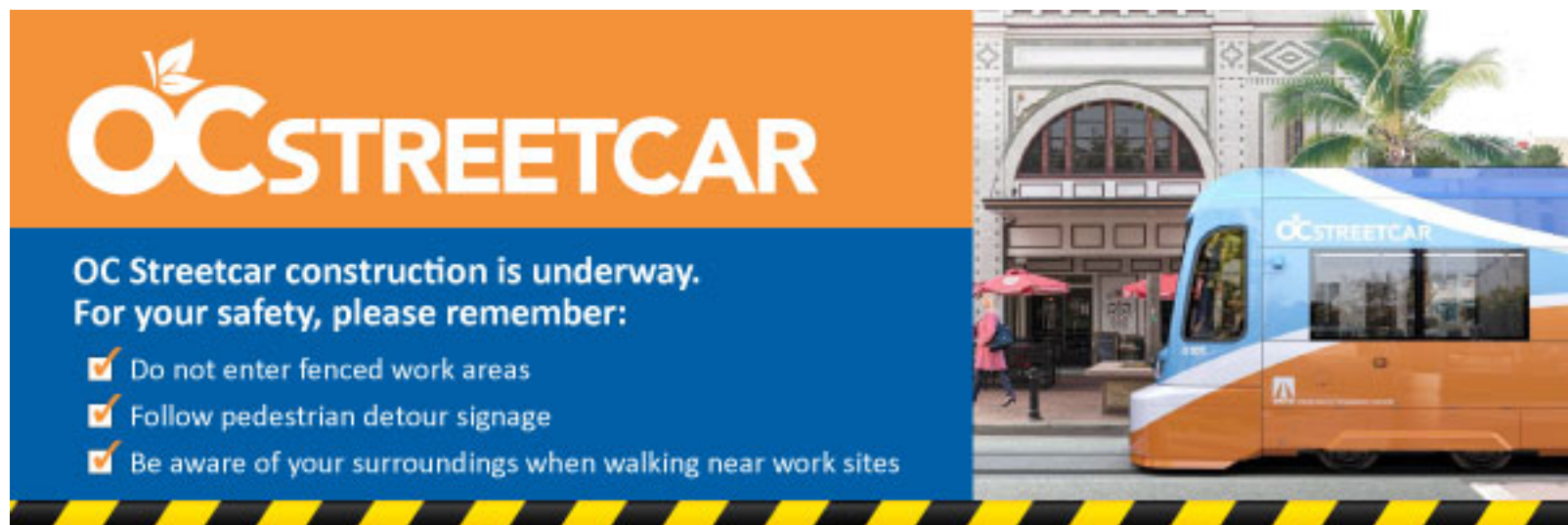
[OCStreetcar.com](http://OCStreetcar.com)



Download a PDF of the parking map [here](#).



OCTA's Eat Shop Play program supports businesses located along the future OC streetcar route. Benefits to customers include special deals, invitations to community events and free parking for the first hour in nearby structures. Learn more at [octa.net/eatshopplay](http://octa.net/eatshopplay).



### **About the Project**

OC Streetcar is the first modern streetcar project to be built in Orange County and will serve Santa Ana's historic and thriving downtown, which includes federal, state and local courthouses, government offices, colleges, an artists' village and a thriving restaurant scene. It will operate along a 4.15-mile route that connects the Santa Ana Regional Transportation Center (SARTC) and a new transit hub at Harbor Boulevard and Westminster Avenue in Garden Grove.

To share this e-blast, forward this [link](#)



[OCstreetcar.com](http://OCstreetcar.com)



[OCstreetcar@octa.net](mailto:OCstreetcar@octa.net)



1(844) 7GO-OCSC or  
1(844) 746-6272



[facebook.com/OCstreetcar](https://facebook.com/OCstreetcar)



[@OCstreetcar](https://twitter.com/OCstreetcar)



[@OCstreetcar](https://instagram.com/OCstreetcar)

