



**ORANGE COUNTY TRANSPORTATION AUTHORITY**

## **Measure M2 Sales Tax Forecast**

**PowerPoint**



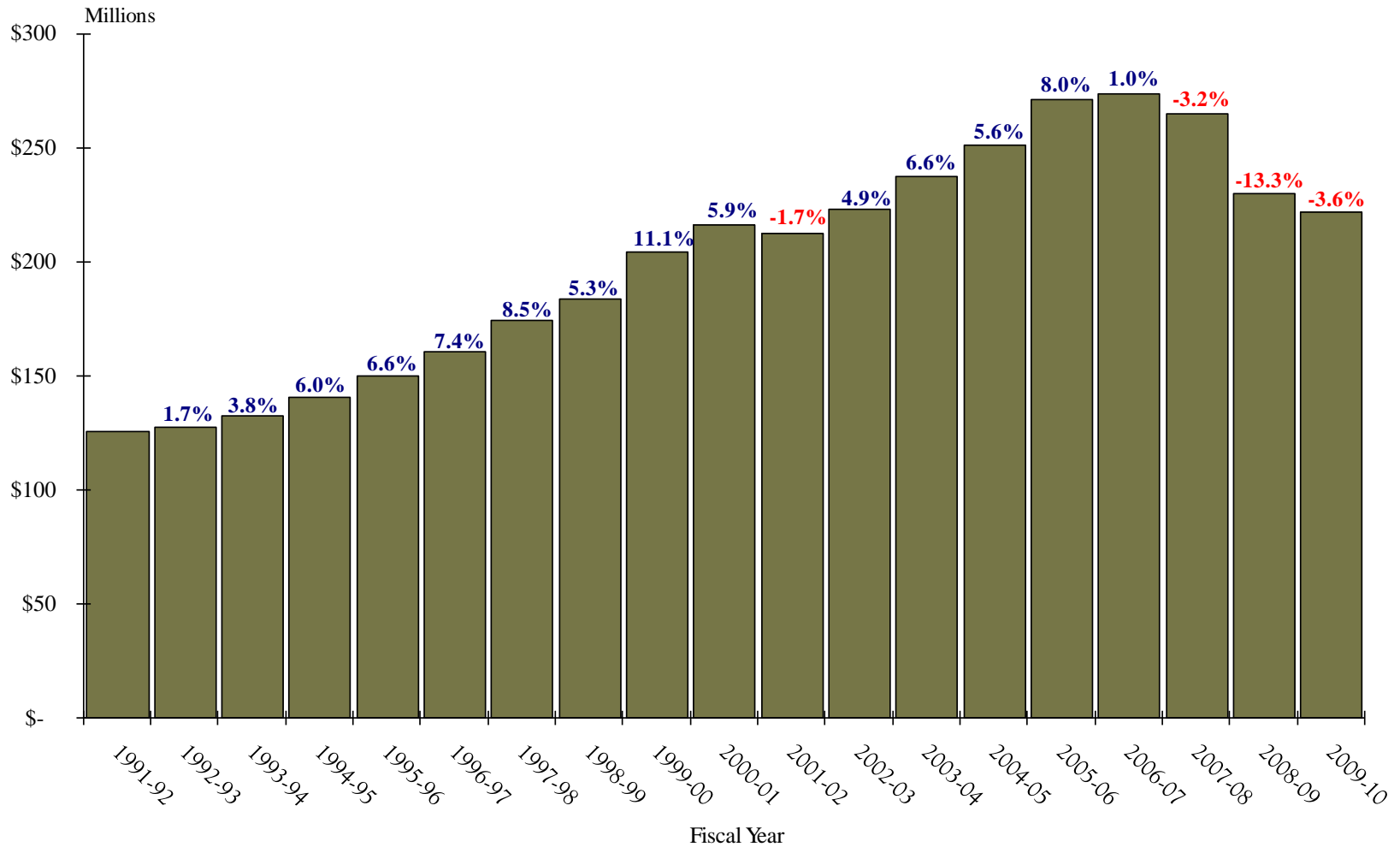
# ***Measure M2 Sales Tax Forecast***



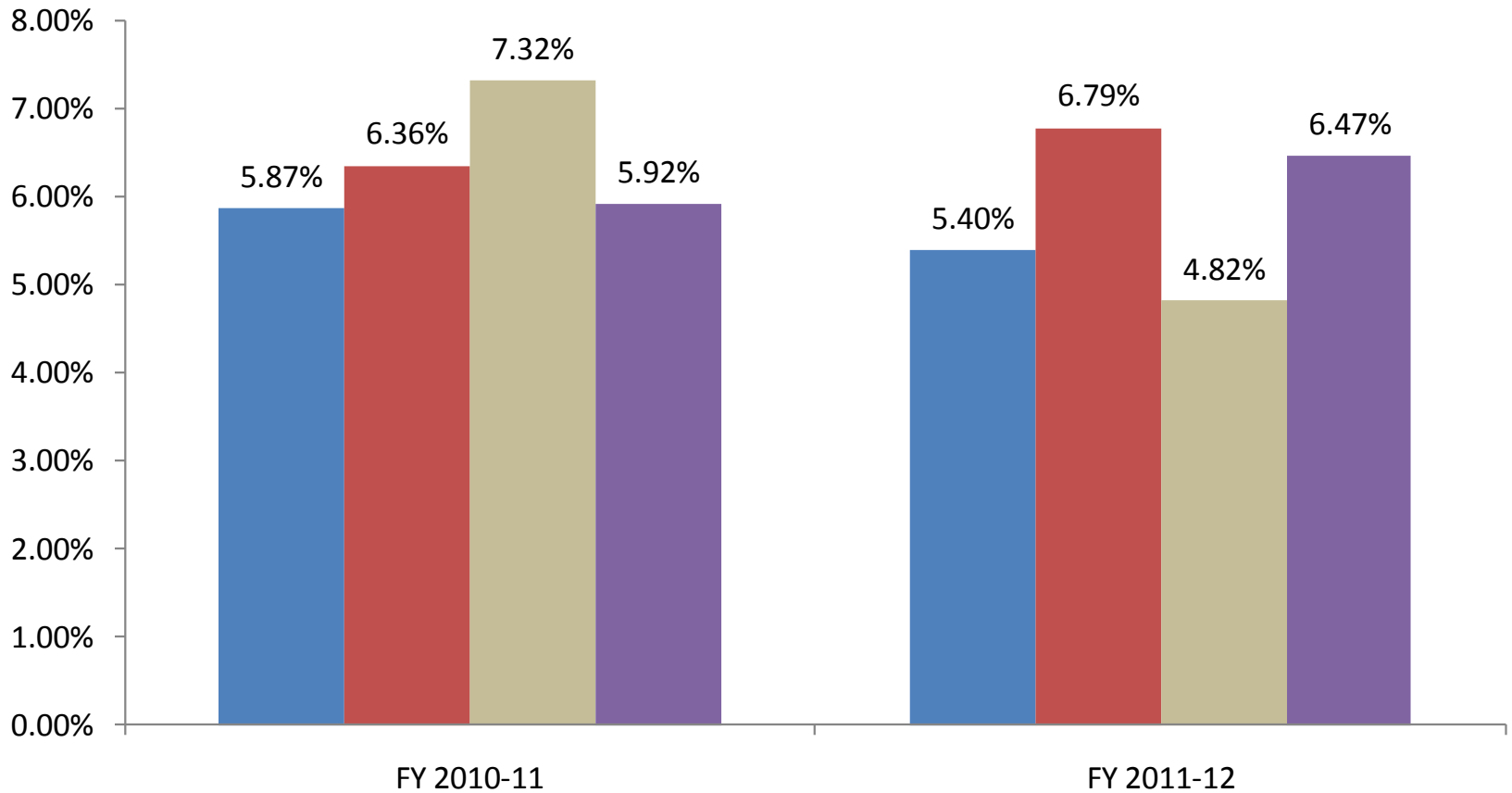
# ***Background***

- Chapman University Forecast
  - Since inception of Measure M (M1) in 1991
  
- Three University Forecast
  - Since development of Measure M2 (M2)
  - Average of three forecasts
    - Chapman University
    - California State University, Fullerton
    - UCLA – Anderson Forecast

# Historical M1 Sales Tax Revenues



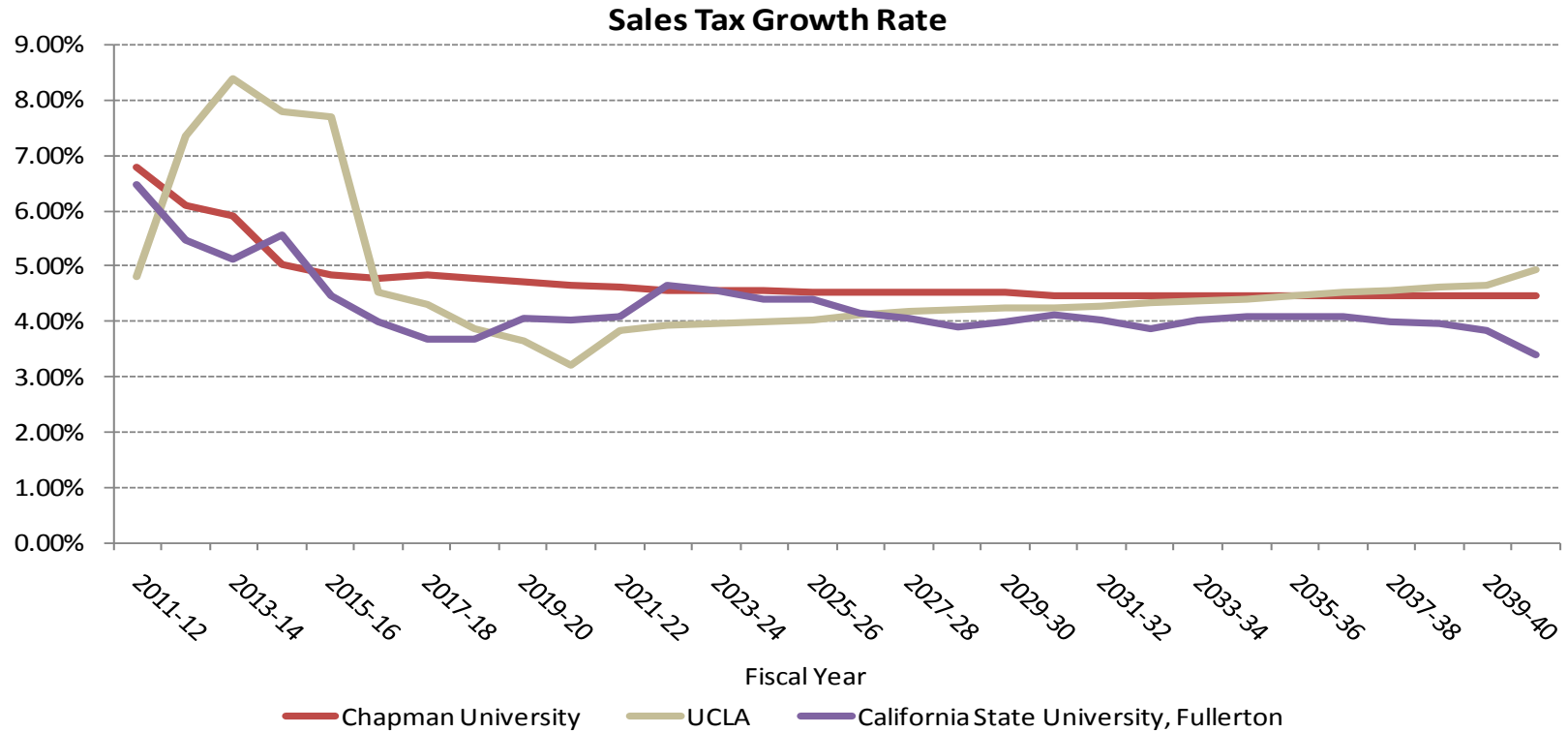
# Growth Rate Projections for FY 2010-11 and FY 2011-12



■ OCTA   ■ Chapman University   ■ UCLA   ■ California State University, Fullerton

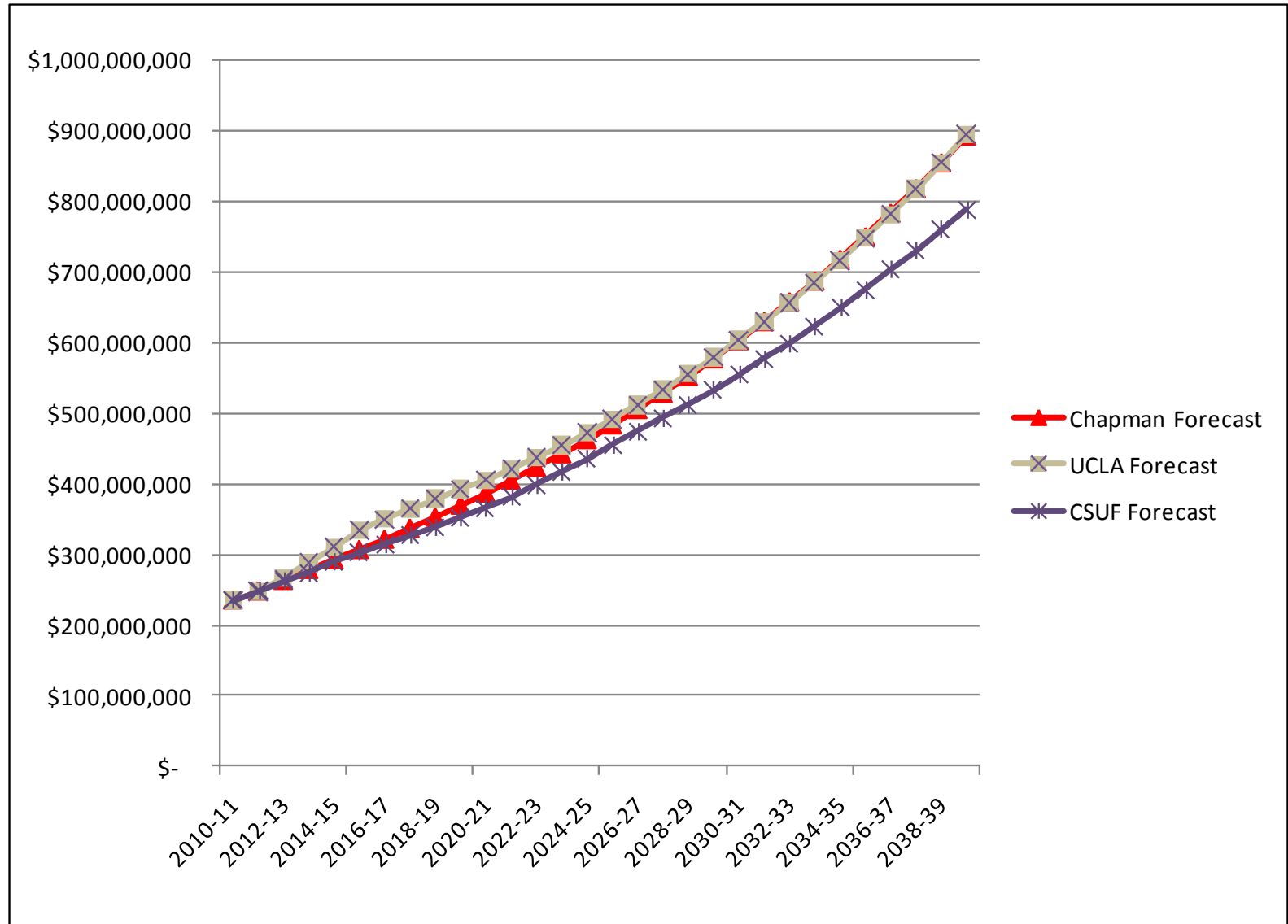


# M2 Forecast By University

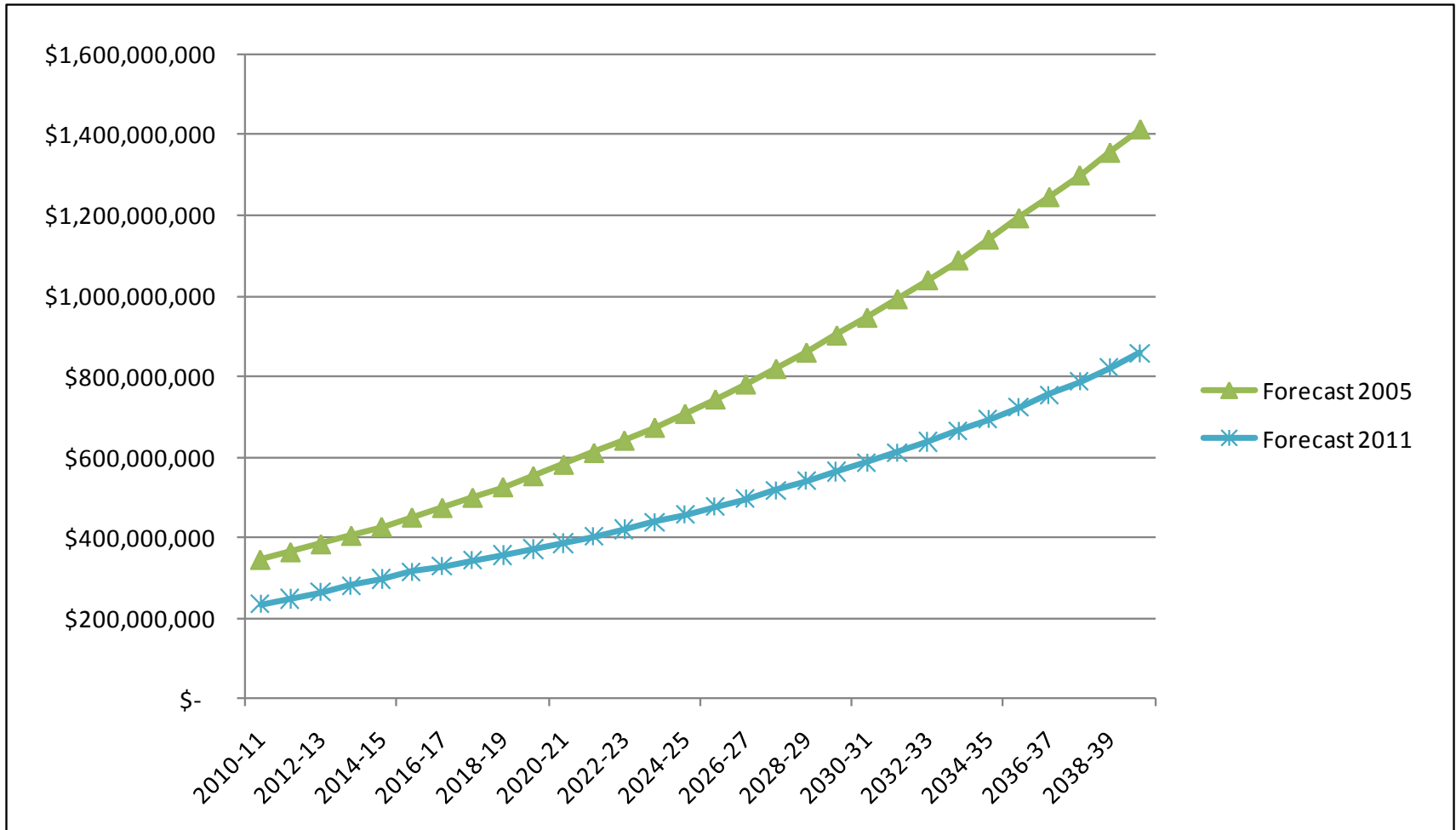


	1-Year Rate FY 2012	Average 3-Year Rate FY 2012-2014	Average 5-Year Rate FY 2012-2016	Average 10-Year Rate FY 2012-2021	Average 30-Year Rate FY 2012-2041
UCLA	4.82%	6.86%	7.21%	5.56%	4.71%
Chapman University	6.79%	6.27%	5.74%	5.24%	4.75%
California State University, Fullerton	6.47%	5.69%	5.42%	4.65%	4.27%

# Spring 2011 Forecasts



# Forecast Comparison





# M2 Forecast Comparison

